



## NEWS FROM THE NORTH - CRS

CRS Tunnelling has started mining work on the Calamity Creek Culvert Replacement Project in New Liskeard (Northern Ontario). Tunneling scope for this Design Build project includes installing twin 2100 mm ID concrete pipe culverts. Utilizing a mixed face EPB Lovat RME 102PJ TBM, CRS has started mining on the first tunnel run which is 150m long (500 LF). As of early August 12th, crews has mined 13 pipes, using one muck car at a time. Gantry and belt conveyer sections are being installed behind the TBM which will allow us to mine using a full muck train. Once the TBM reaches the retrieval shaft, it will be removed and reinstalled into the launch shaft to complete its second 150 m long drive.

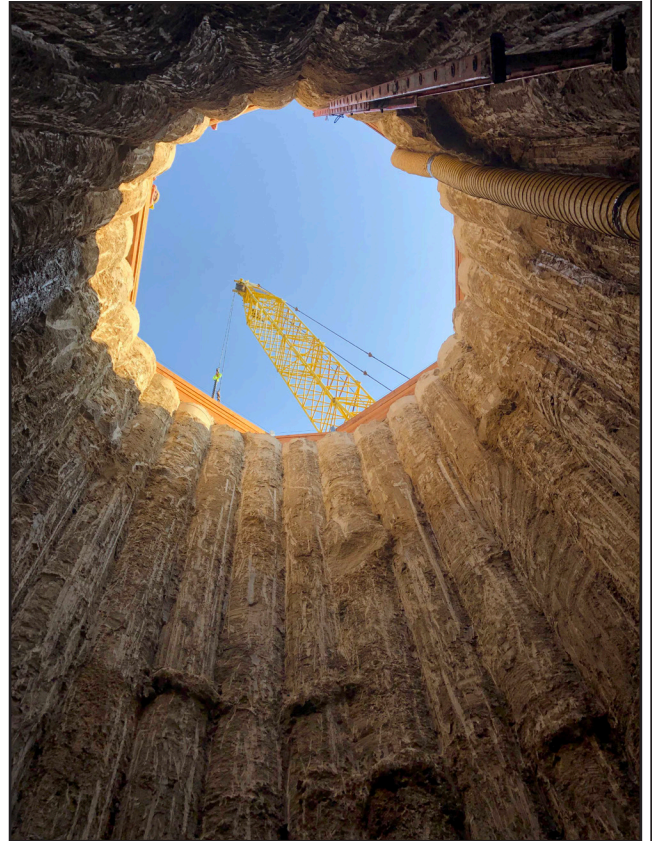


In other exciting news, CRS has been nominated for a Center for the Advancement of Trenchless Technologies (CATT) Award of Excellence for the Dixie Rd. and QEW Crossing Project! Great job everyone for making this innovative project a success!

## PIKE RIVER PROJECT - RACINE, WI

In July, Super Excavators was low bidder on the Pike River Transmission Water Main Project for the Racine Water and Wastewater Utilities. This \$7 million project involves approximately 11,200 LF of 36" water main, 600 LF of 36" water main in 48" casing jack and bore, 200 LF of 36" water main by directional drilling, valves, hydrant leads, erosion control, asphalt work, traffic control and restoration. The transmission main will serve the Foxconn development. Work is slated to start in late fall / winter of 2019. This is a great job for our team, and will keep our local crews busy!

Work in Greenville, SC is proceeding per plan. The starter tunnel is on schedule to be completed mid-September, and the drop shaft structure is being poured. TBM from Dibco in Canada has begun to arrive at the job, and show up, and tunneling will begin in October.



## INDOT DRAINAGE PROJECT MOVES INTO TUNNELING PHASE

Work on the INDOT micro tunneling project have been steadily progressing. Over the past few months, 3 secant pile working shafts have been constructed and excavated and work has begun setting up the first tunneling run with the launch of the MTBM set for the end of August. The scope of the project has increased adding a 3rd 1000 LF MT run on the south tunneling project and the potential of a 4th 650 LF run extending the project into the next phase originally designed as open cut. The tunneling crews will be busy in Nobelsville IN through the end of the year. Pictured above is Shaft No. 2 - 18' ID x 44' Deep. Shaft No. 1 and No. 2 were also deep shafts - 30' and 43', respectively.

## ANNOUNCEMENTS

- We are happy to announce that Jeff Tatum will be filling the position of Tunnel Superintendent, previously held by Gregg Rehak. Congratulations, Jeff!
- Save the Date: Company Holiday Party will be held on Saturday, December 7th, 2019. Details to come.





## UPDATE FROM THE SAFETY DEPARTMENT

### Thunderstorm & Lightning Plan

The Safety Department has drafted a new Emergency Response Plan, and have also implemented an updated Thunderstorm & Lightning Plan that all employees should be aware of. The updated plan is as follows:

When a severe thunderstorm watch is issued for the area of the project, the Foreman or Supervisor shall monitor the storm. (i.e. radio, internet weather reports, forecasts and emergency notifications). Watch for darkening clouds, increasing wind speeds and rapid temperature changes which can indicate developing thunderstorms. In the case of Lightning, the following protocol should be followed:

- Outdoor operations will be suspended when lightning is within a 5 second count of the site (i.e., the time difference between seeing a lightning strike and hearing the sound). High profile equipment operations shall be suspended when lightning is within 15 seconds of the site. High profile operations, include crane operations, drilling operations, backhoe operations or electrical wiring tasks.
- Equipment operators shall stop their equipment and park it safely.
- No personnel shall be left on the ground in an exposed location.
- Seek shelter in low profile rubber tire equipment including cars and pickups, and/or into buildings that contain properly grounded electrical equipment.
- Work will resume after a 30 minute period following the last sound of thunder.

### Site Security

Keep in mind that site security is a top priority on all job sites. We have been experiencing an uptick in equipment theft (skid steers). The following procedures should be followed at the end of the shift:

- All machinery must be locked.
- Fuel and Radiator caps must be locked.
- Cab shielding must be in place (if applicable).
- Lockbox numbers should be locked and codes fully scrambled.
- LOCK EVERYTHING THAT CAN BE LOCKED

Fall hunting season is approaching. Remember that safety doesn't stop at work! Follow responsible hunting practices. We want all of our employees to return to work safe the following week. Good luck to all the hunters out there.

Todd Keener, Director HR/Risk/Safety

## A BUSY SUMMER FOR SX BLASTING

SX Blasting has been hard at work on the Waukesha Greenmeadow project drilling and shooting bedrock in the open trench where they are pulling 12 ft. of rock about 30 ft away from existing properties. Crews are also working on a Project in Silver Bay MN for a new Sanitary Sewer Project, and working on finishing up the Island view project in Rainy Lake MN that started in 2017. In addition, SXB has a couple of drills to complete for local quarries, and still have a project to complete off of Holy Hill Rd. in Germantown for the Village of Germantown. SXB is still actively bidding work, and working with some local developers to complete some private development work.

## GERMANTOWN CORPORATE PARK, PHASE 2

After finishing the 700,000 Square foot Briggs & Stratton Building, Riley Construction awarded Super Western and Super Excavators the next phase of the project at the Germantown Corporate Park owned by Zilper Property Group. Super Western is performing the earthwork, and SEI is performing the site utilities for two additional warehouse facilities, totaling over 400,000 square feet. Completion of the mass grading for the rest of the 90 acre business park is planned for fall 2019.



Pic: Pond Excavation work for the Germantown Corporate Park.

## HOUSTON AIRPORT PROJECT IN EARLY PHASE OF PROJECT PLANNING

The City of Houston Council approved the George Bush Airport Sanitary Improvement project and SEI was issued signed contracts. We currently are preparing all the upfront documents and submittals along with setting up a site office. Houston Airport System is in the process of renewing the FAA permits. We are expecting a limited notice to proceed within the next two months, and expecting to break ground late 2019.

We recently hired a new traveling Assistant Project Manager, Francisco Garcia who's first assignment is the Houston project. Francisco recently passed the Professional Engineers exam, and resides in Chicago. Please welcome Francisco to our family as he transitions into his new role and gets to know everyone. Welcome Francisco!!! Francisco, and onsite Safety Manager, Dave Gauerke have been busy working on site safety and phasing plans.

## CADDY VISTA LIFT STATION PROJECT

In early spring Super Excavators was awarded the Caddy Vista Lift Station replacement in the Village of Caledonia, WI. We open cut the excavation for the new prefabricated lift station and wet well, set the structures with a 400 ton crane, and are currently under way relaying the sanitary sewer at depths close to 30-feet in tight quarters. Foreman Rod Gruber is leading the charge, and soon we'll be ready for Super Western to come in to prep the trenches for paving.